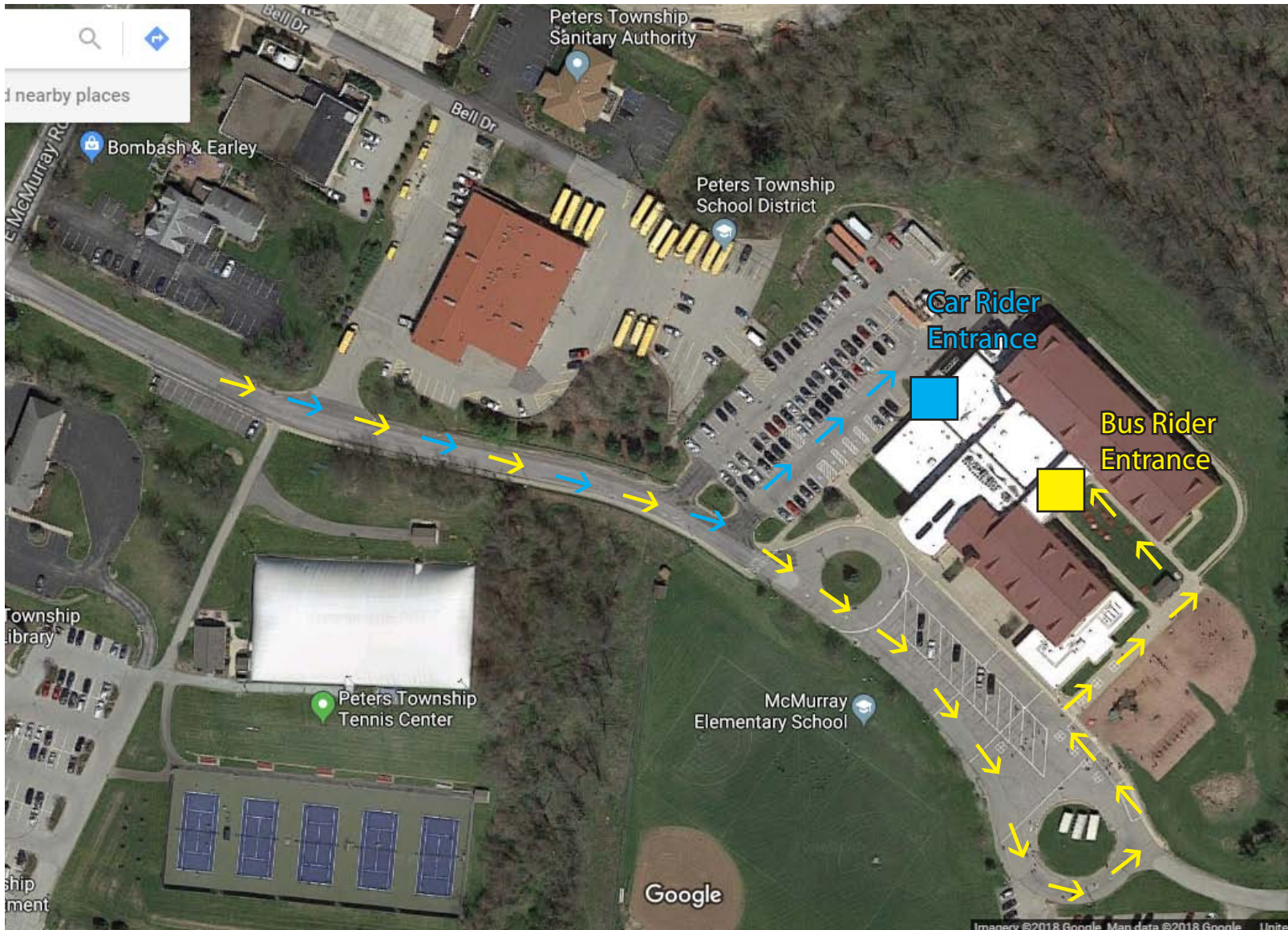


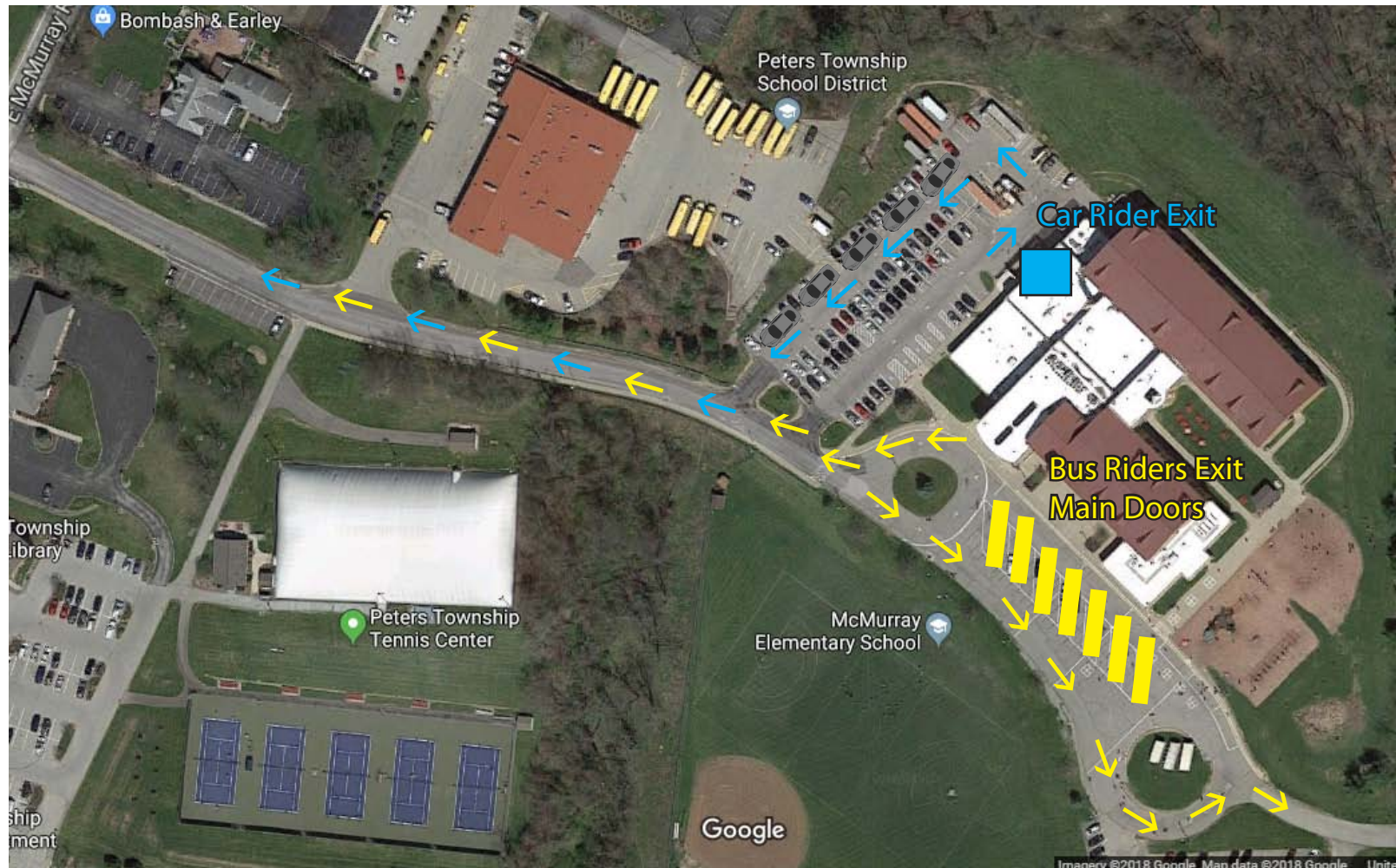
# McMurray Elementary School: ARRIVAL PROCEDURES



**Car Riders:** Car riders will enter at Door #6 and walk through thermal cameras for temperature check in hallway near Art Room.

**Bus Riders:** Buses will drop off two at a time on sidewalk. Students will enter via courtyard entrance and proceed to Auxiliary Gym for temperature scan.

# McMurray Elementary School: DISMISSAL PROCEDURES



**Car Riders:** Car riders will dismiss normally beginning at 3:15 p.m. daily. If you are unable to find a parking space in the lot, please pull around to the stop sign at the exit of our parking lot and park along the right side of the lot so that cars may still exit the lot. This may result in a few cars being blocked for a short time (between 5-7 minutes), but will create a safer condition and allow traffic to flow out of the lot.

**Bus Riders:** Bus riders will be called in groups by homeroom. Once buses are loaded, they will exit 10 buses out Orchard Highlands and 8 towards East McMurray Road.